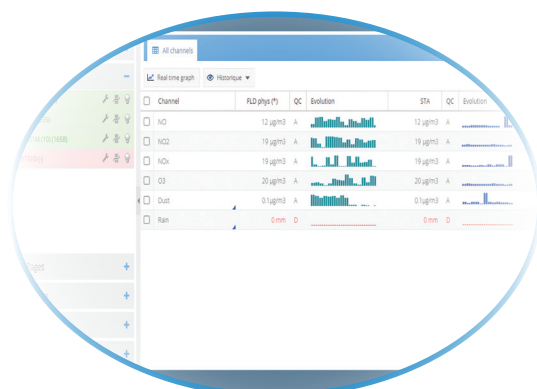


Environmental Data Acquisition System



- Data acquisition from any type of environmental system: analysers, sensors, meteo, samplers, ...
- Automatic data prevalidation taking into account the acquisition context
- Automatic management of the analyser's calibration
- More than 250 protocols of communication available including MODBUS/TCP
- Remote access to the DAS via internet and a WEB based interface
- Data storage in a local database

eSAM is available on:

Rack 19" 3U Frame

- > WINDOWS or LINUX OS
- > Standard configuration
 - 6 serials ports
 - 2 Ethernet ports
 - 6 USB ports
- > Option: additionnel I/O
 - 6 or 8 analog input
 - 6 DI + 6 relay
 - 8 additional RS 232



Desktop computer

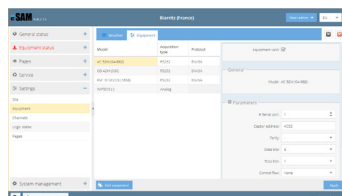
- > WINDOWS OS
- > Standard configuration
 - 8 RS 232
 - 1 Ethernet
- > Option: additionnel I/O
 - 6 or 8 analog input
 - 6 DI + 6 relay
 - 8 additional RS 232



Remote access to the data acquisition system

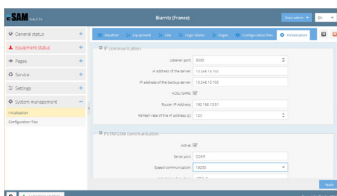
Technical features:

Data Acquisition



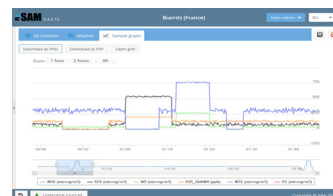
- > Acquisition of instantaneous measurements at a configurable frequency ranging from 5 seconds to 24 hours
- > Management of the metrological context: analysers' parameters and internal failures, technical measurements, external signals (door opened, flow, etc.)
- > Controls of lower and higher validity limits, sensitivity threshold, immobility, slope and follow-up of peak episodes

Automatic prevalidation



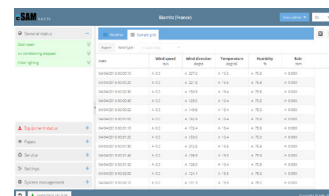
- > Automatic validation of the data with the XR software
- > Association of a quality code with each value
- > Evaluation of quality indicators for each data value: min, max, standard deviation, the number of over-thresholds, availability ratio
- > Prevalidation of the data according of the metrological context

Communication



- > Various communication modes: land line, GSM, IP, GPRS...
- > Remote software update
- > Data file exchange according to the ISO 7168 standard
- > Bi directional communication
- > Automatic polling at user defined intervals

Calibration



- > Automatic management of calibration sessions: 5 span points
- > Ability to adapt the linearization parameters according to calibration results
- > Control of absolute, relative drifts, drifts between span points, standard deviation drifts
- > Storage of all the information related to the calibration

Distributed by:



iséo / Environnement S.A

230 Allée Théodore Monod - Technopole Izarbel

64210 BIDART - FRANCE

Tel.: +33(0)5 59 41 56 66 - Fax: +33(0)5 59 41 56 67

Web: www.iseo.fr

A company of the ENVIRONNEMENT S.A Group

E-mail: contact@iseo.fr