

## TECHNICAL SPECIFICATIONS - EXP Source

### Overview

The Model 2020-EXP is a split chassis design that has a removable Control/Cleanup module and a separate removable pump module that can be used together or independently. The split design allows the overall weight of the unit to be distributed for users to easily carry inside of shelters or locations that are difficult to access. All modules can be stored for shipment inside of the provided transport case that has a telescopic handle and wheels.

The Model 2020-EXP is a split chassis design that has a removable Control/Cleanup module and a separate removable pump module that can be used together or independently. The split design allows the overall weight of the unit to be distributed for users to easily carry inside of shelters or locations that are difficult to access. All modules can be stored for shipment inside of the provided transport case that has a telescopic handle and wheels.

### Key Features

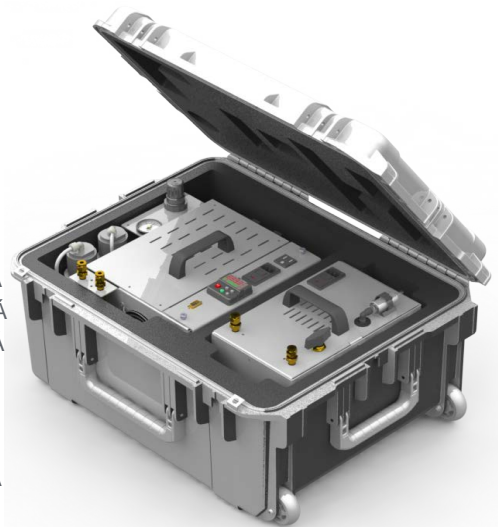
The Model 2020-EXP is a split chassis design that has a removable Control/Cleanup module and a separate removable pump module that can be used together or independently. The split design allows the overall weight of the unit to be distributed for users to easily carry inside of shelters or locations that are difficult to access. All modules can be stored for shipment inside of the provided transport case that has a telescopic handle and wheels.

The Model 2020-EXP is a split chassis design that has a removable Control/Cleanup module and a separate removable pump module that can be used together or independently. The split design allows the overall weight of the unit to be distributed for users to easily carry inside of shelters or locations that are difficult to access. All modules can be stored for shipment inside of the provided transport case that has a telescopic handle and wheels.

The Model 2020-EXP is a split chassis design that has a removable Control/Cleanup module and a separate removable pump module that can be used together or independently. The split design allows the overall weight of the unit to be distributed for users to easily carry inside of shelters or locations that are difficult to access. All modules can be stored for shipment inside of the provided transport case that has a telescopic handle and wheels.

### Key Features

- ▶ Pressure or Vacuum mode for pump module
- ▶ Condensate/purge valving for moisture removal
- ▶ Automatic purge frequencies
- ▶ Real-time pressure gauge
- ▶ P\* A, B, C
- ▶ Real-time pressure gauge
- ▶ Rugged top mounted carrying handles
- ▶ Dew point - Less than -20°C
- ▶ 1/4" outlet ports



### Key Features

- CO Oxidizer
- Pydrocarbon Oxidizer
- CO<sub>2</sub> Scrubber
- 1 x Ethernet: 10/100Base-T
- 1 x RS232 (300-115,200 baud)
- MODBUS Protocol Support

### Key Features

- NO, P\* A, B, C, D, E, F, G, H, I, J, K, L, M, N, O, P, Q, R, S, T, U, V, W, X, Y, Z
- NO, P\* A, B, C, D, E, F, G, H, I, J, K, L, M, N, O, P, Q, R, S, T, U, V, W, X, Y, Z
- NO, P\* A, B, C, D, E, F, G, H, I, J, K, L, M, N, O, P, Q, R, S, T, U, V, W, X, Y, Z
- CO < 5 ppb

### Key Features

- 11 lbs (5.0 kg) P\* A, B, C, D, E, F, G, H, I, J, K, L, M, N, O, P, Q, R, S, T, U, V, W, X, Y, Z
- 21 lbs (9.5 kg) P\* A, B, C, D, E, F, G, H, I, J, K, L, M, N, O, P, Q, R, S, T, U, V, W, X, Y, Z
- 30 lbs (13.6 kg) P\* A, B, C, D, E, F, G, H, I, J, K, L, M, N, O, P, Q, R, S, T, U, V, W, X, Y, Z
- 10 lbs (4.5 kg) P\* A, B, C, D, E, F, G, H, I, J, K, L, M, N, O, P, Q, R, S, T, U, V, W, X, Y, Z
- 10 lbs (4.5 kg) P\* A, B, C, D, E, F, G, H, I, J, K, L, M, N, O, P, Q, R, S, T, U, V, W, X, Y, Z
- 40 lbs (18.2 kg) P\* A, B, C, D, E, F, G, H, I, J, K, L, M, N, O, P, Q, R, S, T, U, V, W, X, Y, Z
- 13.6 kg w/HC Oxidizer

### Key Features

- 98-132 VAC, 50/60HZ
- U) ( ) ( )

### Key Features

- F) ( ) ( )

\*Specifications subject to change without notice